

# DIGITAL EQUITY MAPPING IN HAWAII

Presented by the Hawaii Department of  
Business and Economic Development, and the  
'Auamo Collaborative



# DE SURVEY TEAM



Marceline  
Kanalaupuni-Naff



Issa Moffet



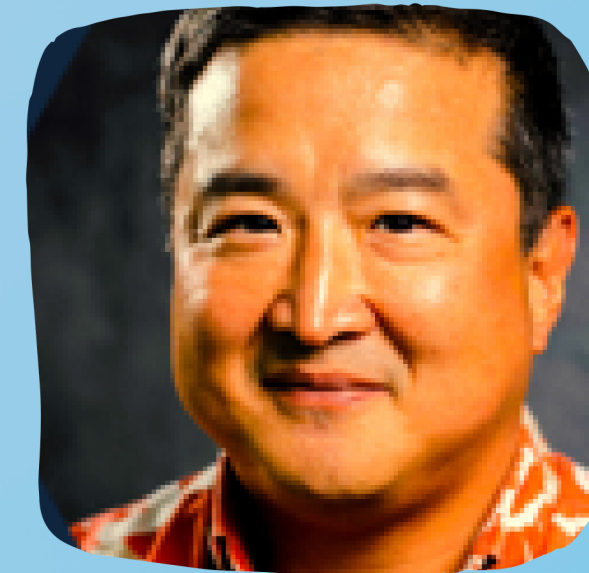
Amber Ternus



Kaleo Bennett



Arthur Buto

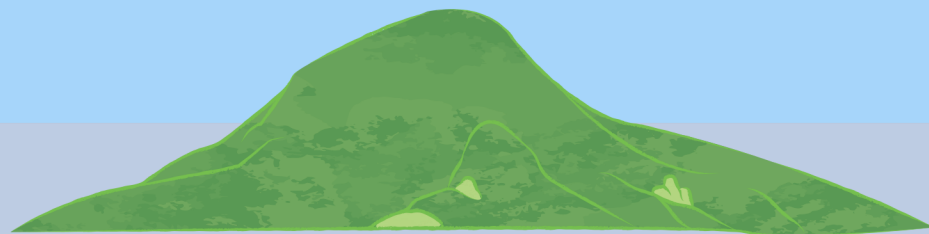


Chung Chang



# Hawaii Broadband & DIGITAL EQUITY OFFICE **STORY**

- Responded to and rolled out services during the pandemic
- Successful community building expanded HBDEO's role
- Ongoing outreach efforts to communities and partners
- Variety of digital equity focused projects
- Post-pandemic goal to make Hawaii the most digitally literate state





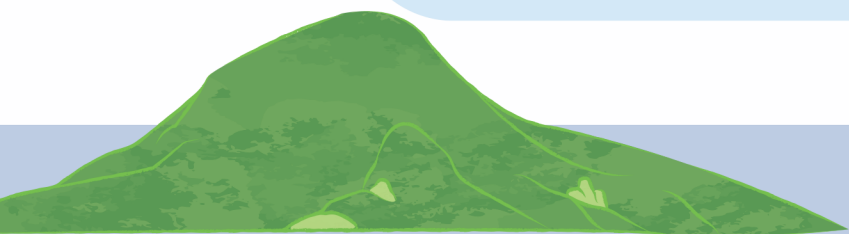
## : ORIGIN TO NOW

### THE HUI

- Began all the way back in 2020 as a response to the unique geographical challenges of Hawai'i.
- Ratified the Digital Equity Declaration with local legislature to combat the digital divide
- Remained a committed grassroots organization combating inequality.

### THE MAP

- Planning began in November of 2022.
- Prototyping and successful alpha build launched in February.
- Official launch on May 3rd of this year.
- As of July, over 200 activities recorded!



# COMMUNITY MEMBER: 'AUAMO COLLABORATIVE

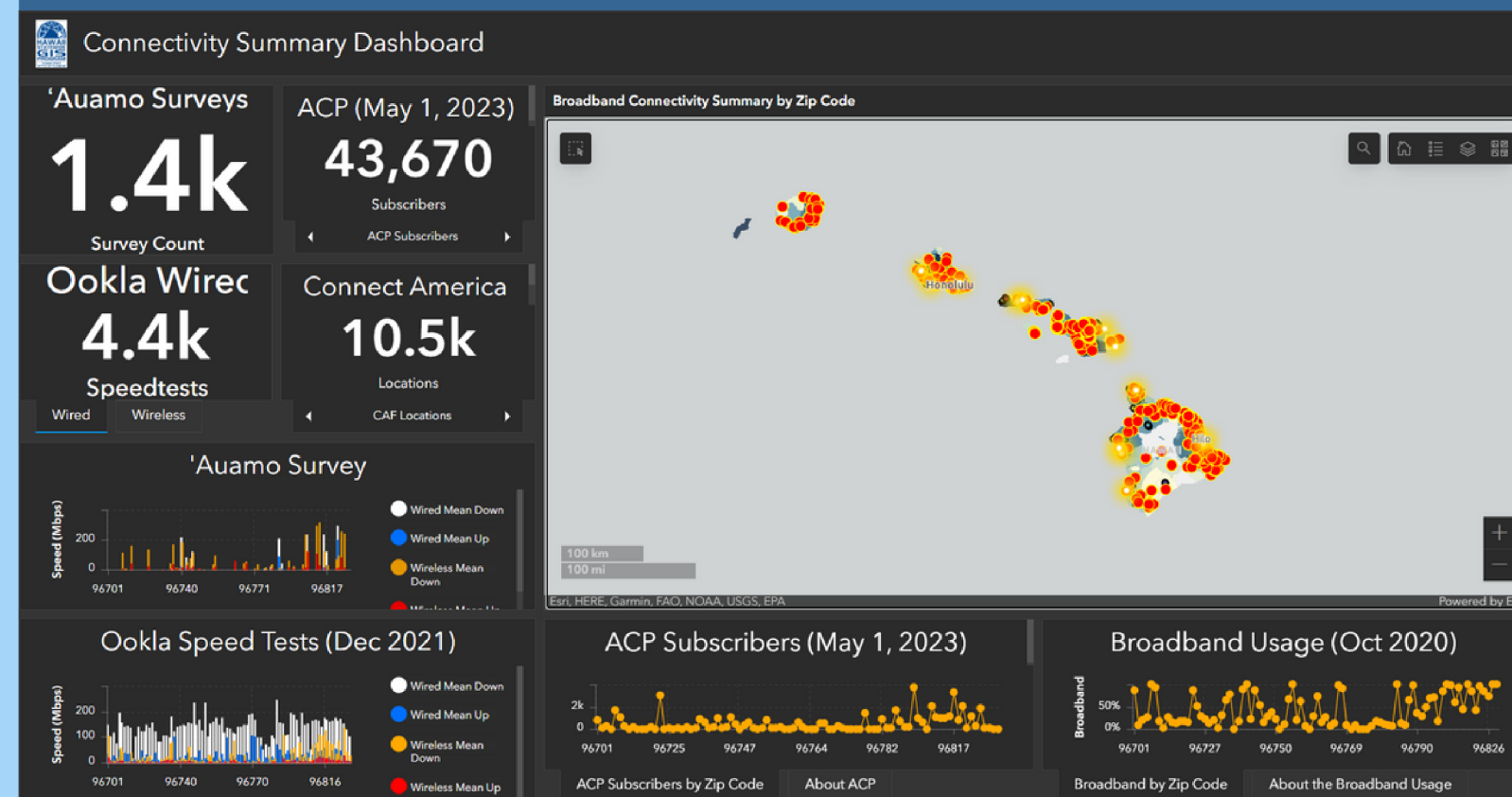


## SPEED TEST SURVEY

The `Auamo Collaborative speed test project aims to understand the following:

1. Extent of broadband coverage
2. Extent of digital redlining
3. Provide a clear map of actual vs. claimed coverage
4. Inform policy efforts that aim to create community-led solutions
5. Inform & Advocate towards creative solutions and efforts

## DASHBOARD



# 'AUAMO COLLABORATIVE SPEED TEST WEBSITE

COMING SOON

407 Kaumana Drive  
Hilo HI 96720  
auamocolaborative.org



Auamo Collaborative  
Kāhaka Maoli Nonprofit Corporation

## Hawai'i Broadband Speed Map

### What is Hawai'i Speed Test?

*Hawai'i Speed Test is a broadband connectivity initiative sponsored by 'Auamo Collaborative, a Hawai'i nonprofit dedicated to improving outcomes and building resilience in communities across Hawai'i. This site provides a simple and convenient place for us to collect broadband speed data from locations all over the state in a publicly available map that anyone can use to track how*

Let's Chat!

# COMMUNITY AND GEOGRAPHY

The Coronavirus pandemic reinforced the importance of broadband networks, equity, and inclusion. Using the Fabric Data from the Federal communications Commission, the County of Hawaii addressed the bulk fabric challenge process and last mile prioritization using ArcGIS. As part of this presentation, the County explores how the Broadband Outreach ArcGIS Solution was applied to address the digital divide. Furthermore, we share how ESRI's ArcGIS Spatial Statistics and Analyst tools were used to challenge the validity of the fabric data. Hawaii Island is over four thousand square miles in size and two thousand square miles from the nearest continent. Solutions for this remote and rural island can be used as a framework and approach for other islands and/or rural communities.

## ASSETS

- Community base
- Strength of community (either map shows or strength allows for map)
- The Hui is broadband in HI
- Priority for keeping projects at community level

## GEOGRAPHY

- Unique geographical challenges of connectivity in Hawaii
- Long-term, living map
- Hyperlocal
- Digital ecosystem

◀ ■ ■ ■ ■ ■ ▶  
**The human side  
of technology**



# KEEPING THINGS HYPERLOCAL

HYPERLOCAL MEANS WORKING WITH LOCAL NEIGHBORHOODS AND COMMUNITIES AT THE GRASSROOTS LEVEL, WITH IN-PERSON MEETINGS AND THE TRANSPARENT SHARING OF INFORMATION.

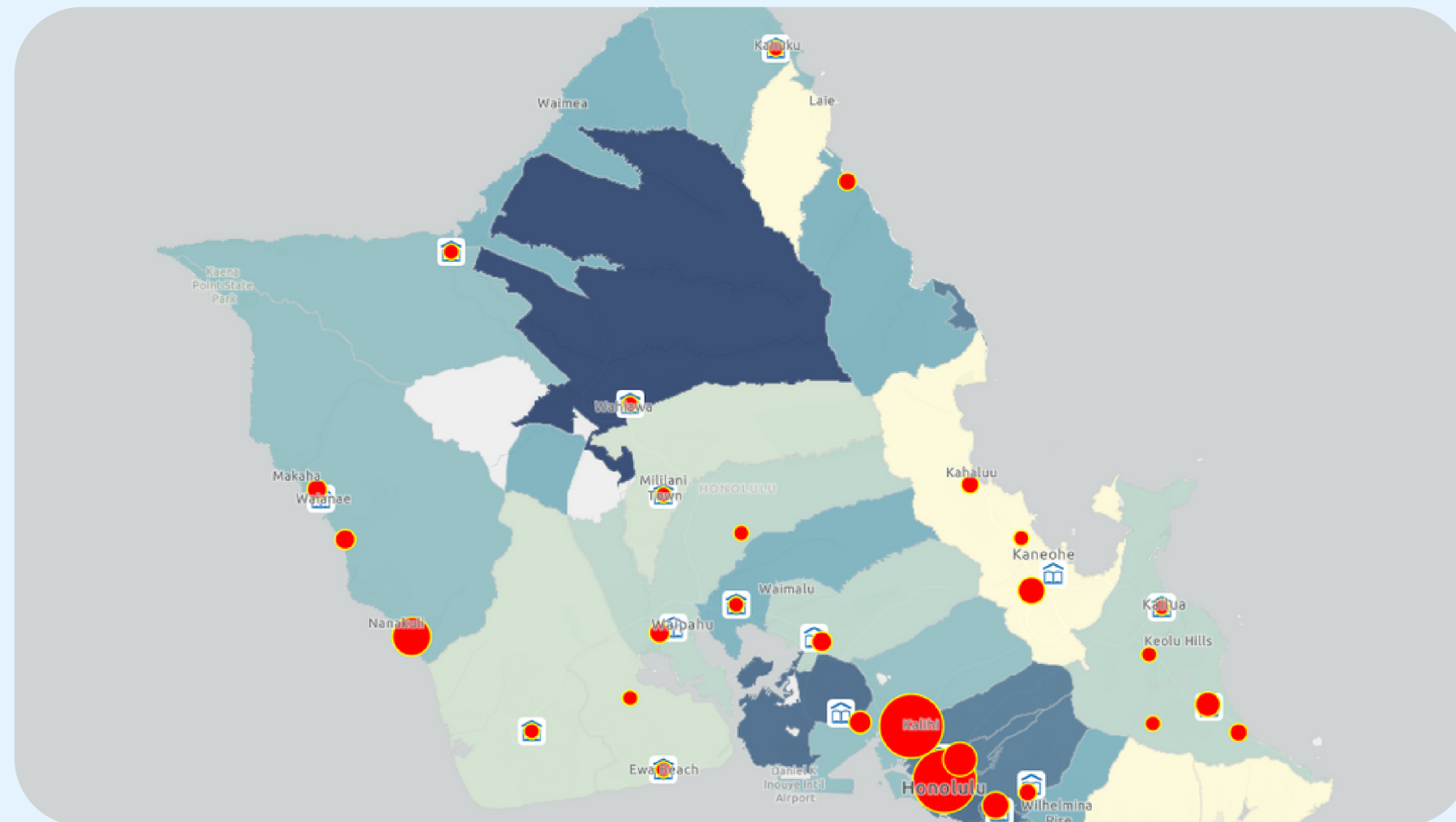
*"Our office is working at the hyperlocal level across the state, with both the Broadband Hui and our in-person events used as tools to share information and resources to support our communities as equal partners." Amber Ternus*





# SURVEY MAPPING

This map represents the culmination of Hawaii's local leaders in bridging the digital divide. Let's explore a little!

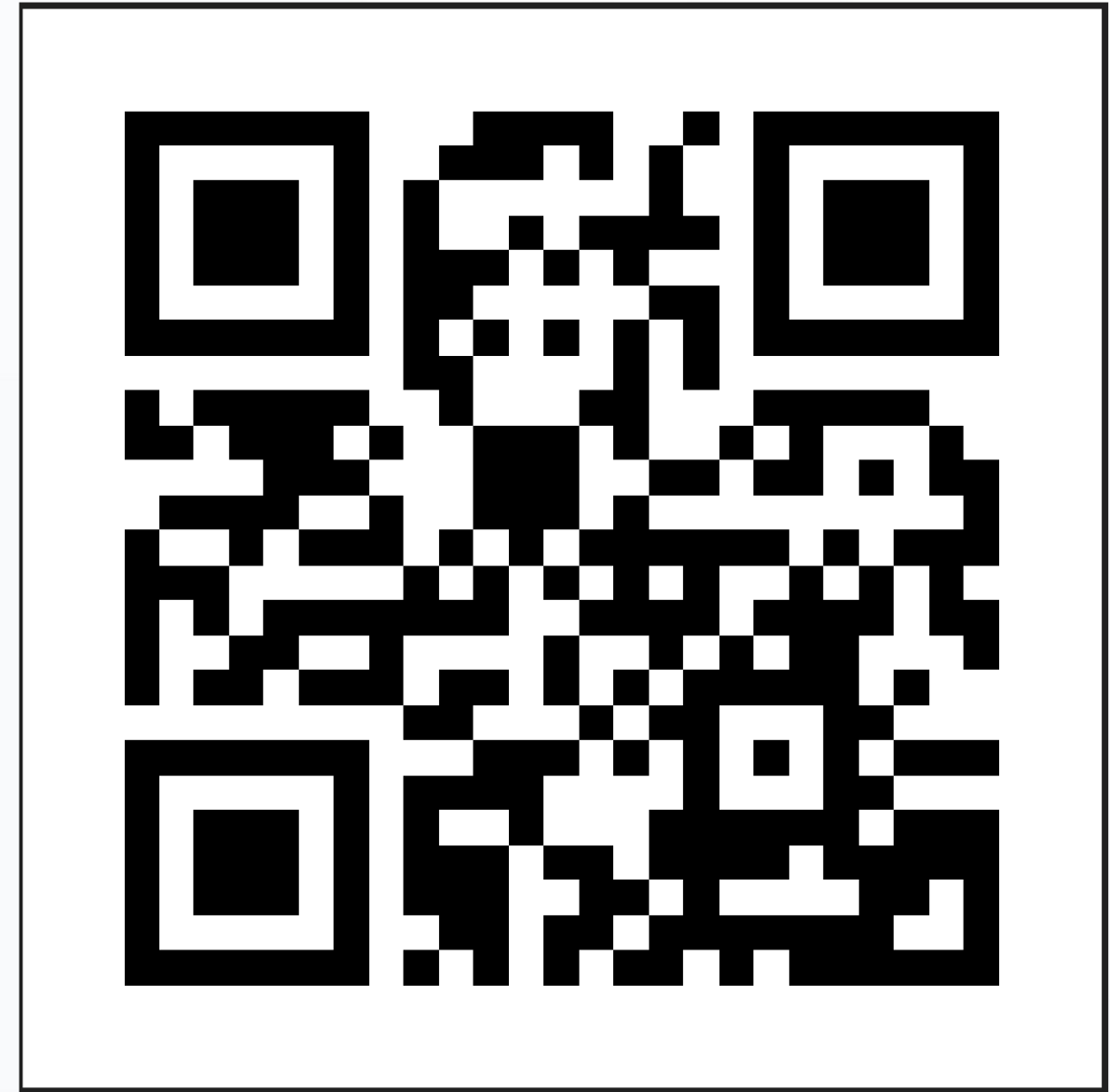


<https://hawaiihub.maps.arcgis.com/home/webmap/viewer.html?webmap=861f6f6a0f024ba783e25f4b8eeb14fb>

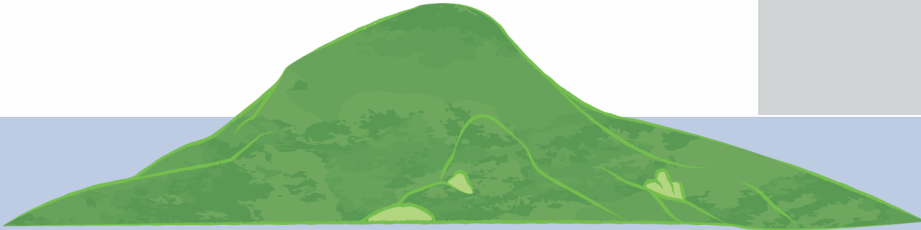
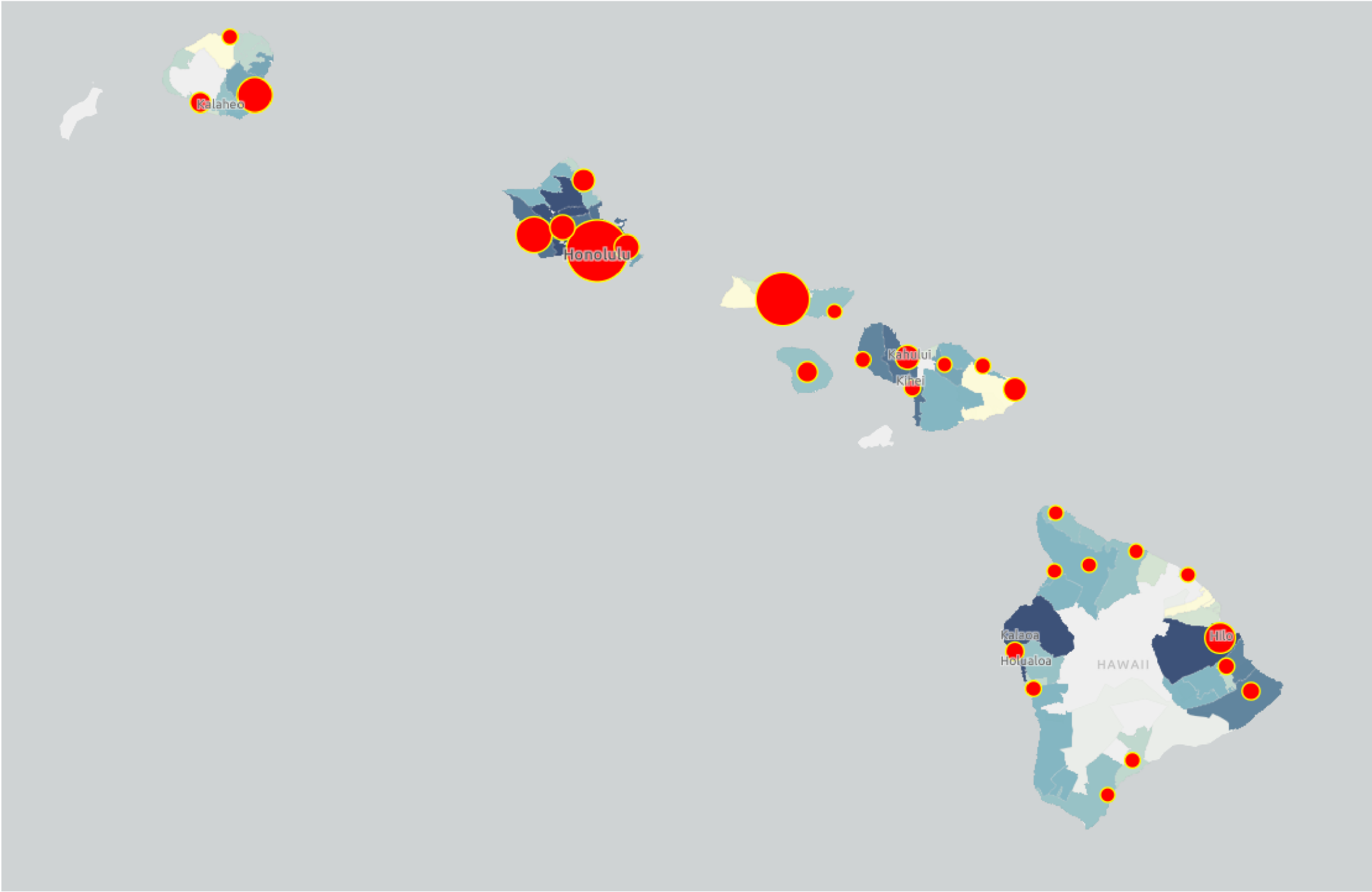


## Hawai'i Digital Equity Project Survey

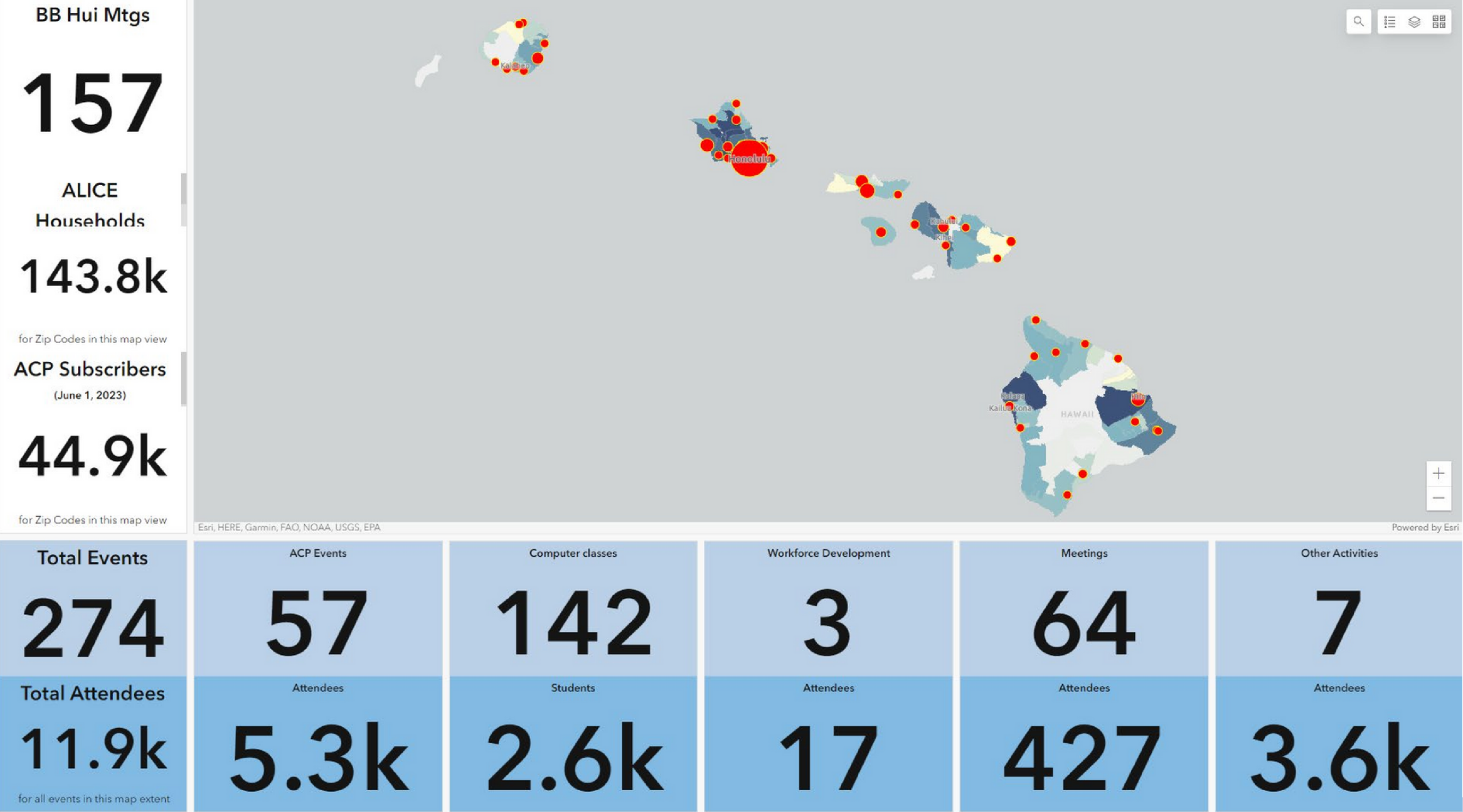
**This survey has a drop-down menu with questions about the type of event, number of participants, location, and funding source. We developed the survey to track and map events, identify areas that need more outreach, and for future grant reporting.**



# DIGITAL EQUITY PROJECT TRACKING SURVEY



# Survey Dashboard





**QUESTIONS?**



# CONTACT US

EMAIL: [DBEDT.INTERNETFORALL@HAWAII.GOV](mailto:DBEDT.INTERNETFORALL@HAWAII.GOV)

PHONE: 808-587-9001



**AFFORDABLE  
CONNECTIVITY PROGRAM**

**SCAN ME!**



**DIGITAL EQUITY PLAN**

